



CORROSION SUITE

MANAGE PIPELINE CORROSION ACROSS THE ENTIRE PIPELINE LIFECYCLE

The Technical Toolboxes Corrosion Suite provides engineering teams focused on pipeline corrosion with the tools they need to model, mitigate, and manage corrosion from design and construction, through operation and integrity, to record keeping. Through the HUB platform's value-added tools, each of these software solutions can share data and entities between each other through one centralized data repository, so the need for repetitive manual data input is greatly reduced when compared to point solutions and internal spreadsheets, and all engineers are aligned using the same data and calculations.

WHY USE THE CORROSION SUITE

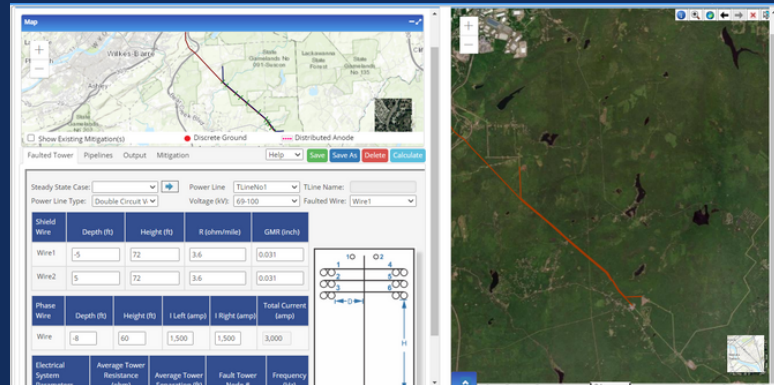
The Corrosion Suite combines solutions to the most pressing challenges to managing pipeline corrosion on one integrated platform, allowing engineering teams to:

- Configure asset data once and plug it into any application
- Ensure that all calculations in the suite align with real world pipe conditions
- Reduce time spent on data mining and entry
- Minimize the risk of calculation and data entry errors
- Perform calculations based on industry standards and best practices
- Visually depict pipeline assets with integrated GIS
- Automate reporting with the click of a button
- Streamline workflows to optimize productivity
- Better collaborate and share information as a team to work faster and safer



WHAT'S INSIDE

- **Pipeline Toolbox:** Over 230 pipeline engineering calculations used by engineering teams on a consistent basis with several corrosion-specific modules
- **RSTRENG+:** A streamlined tool using the RSTRENG method to determine the remaining strength of externally corroded pipe. It automates the Zero Out method to determine effective lengths and to simulate repaired pipe and resulting failure pressure.
- **AC Mitigation PowerTool:** An advanced application to analyze underground pipelines near electric transmission towers to truly understand, model, and mitigate the corrosive effects of AC induced current.



The AC Mitigation PowerTool paired with Esri GIS in the Pipeline HUB



TYING IT ALL TOGETHER WITH THE PIPELINE HUB

- A centralized data repository for all Corrosion Suite applications and reports, shareable across teams
- All tools are GIS integrated to provide visual representations of pipeline assets and automated elevation import
- Automated report generation with a click of a button to fulfill TVC (traceable, verifiable, complete) documentation.

**TECHNICAL
TOOLBOXES**

www.technicaltoolboxes.com

