



INTEGRITY SUITE

MANAGE PIPELINE INTEGRITY ACROSS THE ENTIRE PIPELINE LIFECYCLE

The Technical Toolboxes Integrity Suite provides engineering teams focused on pipeline integrity with the tools to do so from design and construction, through operation and integrity, to record keeping. Through the HUB platform's value-added tools, each of these software solutions can share data and entities between each other through one centralized data repository, so the need for repetitive manual data input is greatly reduced when compared to point solutions and internal spreadsheets, and all engineers are aligned using the same data and calculations.

WHY USE THE INTEGRITY SUITE

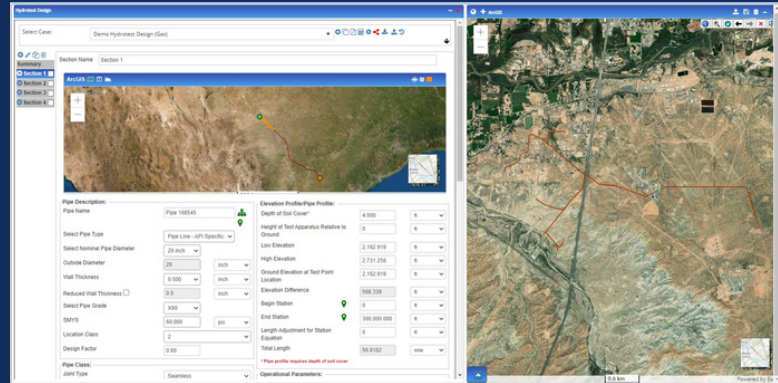
The Integrity Suite combines solutions to address key challenges involved in managing pipeline integrity on one integrated platform, so engineering teams can:

- Configure asset data once and plug it into any application
- Reduce time spent on data mining and entry
- Minimize the risk of calculation and data entry errors
- Perform calculations based on industry standards and best practices
- Visually depict pipeline assets on a global scale using integrated GIS
- Generate automated TVC (traceable, verifiable, complete) reporting with the click of a button
- Streamline workflows to optimize productivity
- Better collaborate and share information as a team to work faster and safer
- Streamline hydrostatic testing plan generation with validation and failure indications



WHAT'S INSIDE

- **Pipeline Toolbox:** Over 230 pipeline engineering calculations used by engineering teams on a consistent basis with several integrity-specific modules
- **Hydrotest PowerTool:** an intuitive, semi-automated and GIS integrated application for design, planning, and verification of pipeline pressure testing
- **Investigative Dig:** an emerging data analytics tool that compares current and historical ILI (in line inspection) data to identify trends and anomalies. *(Application is still in beta and is free of charge).*



The Hydrotest PowerTool paired with Esri GIS in the Pipeline HUB



TYING IT ALL TOGETHER WITH THE PIPELINE HUB

- A centralized data repository for all Integrity Suite applications and reports, shareable across teams
- All tools are GIS integrated to provide visual representations of pipeline assets and automated elevation import
- Automated report generation with a click of a button to fulfill TVC (traceable, verifiable, complete) documentation.

**TECHNICAL
TOOLBOXES**

www.technicaltoolboxes.com

