

# HYDROTEST POWERTOOL

Expedite planning and verification of hydrostatic pressure testing in new and existing pipelines while ensuring full record-keeping compliance.



Software for design, planning, and validation of pipeline hydrostatic testing. The Hydrotest PowerTool reduces capital and operational expenditures while minimizing risk exposure and managing documentation.

With the Hydrotest PowerTool, you can quickly access all of your asset data resources and calculation tools thanks to its hierarchy navigation and ESRI ArcGIS map interface. Components, MAOP variations, wear on potentially maintenance-overdue parts, and the pressure constraints of various wall thicknesses are all stored on the platform. Designate sections automatically based on existing data or select sections for testing depending on a variety of parameters, such as elevation head, class variation, and the availability of water, among others. Hydrotest PowerTool provides the means to plan the supply and disposal of water, create elevation profiles, and input location survey data. Indicators of warning and failure are also displayed, according to the pressure test design's validity.

## KEY FEATURES

- **Semi-Automated Hydrotest Planning:** Say goodbye to complex, time-consuming hydrotest planning. Our tool offers an intuitive process that ensures compliance with CFRs 192 and 195 for both new and existing pipelines
- **Comprehensive Record-Keeping:** Fulfill the "Traceable, Verifiable, and Complete" (TVC) MEGA Rule requirements with ease
- **MAOP Verification:** Simplify the verification and recertification of MAOP for existing pipelines
- **Diagnostic Capabilities:** Diagnoses defects caused by accidents
- **Actionable Project Plans:** Generate field-ready project plans that make testing in the field a breeze

# ADVANCED FUNCTIONALITY



## Asset Data Integration

Leverage asset data integration with Pipeline HUB, Pipeline Toolbox (PLTB), Hierarchy Panel, and the ESRI ArcGIS Map to centralize data and eliminate repetitive manual input



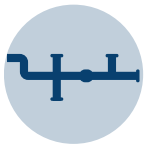
## Elevation Profiles

Generate elevation profiles side by side with the ESRI map and enhance accuracy



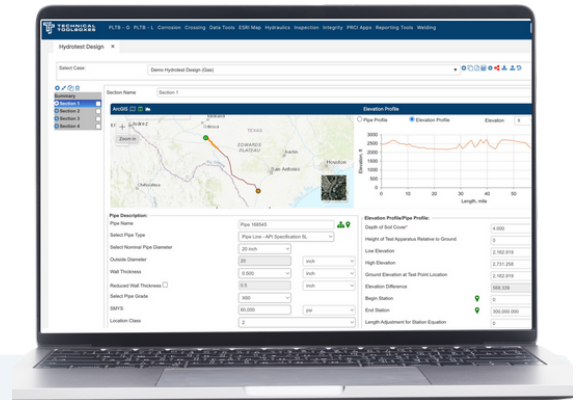
## Collaborative Environment

Centralizes and leverages data to eliminate repetitive manual input. Shares case data in a collaborative environment across your organization



## Intelligent Sectioning

Easily segment pipelines based on various criteria, including elevation head, class location changes, available water, and more



## FIND OUT MORE

Learn more about Pipeline HUB's [Hydrotest PowerTool](#) capabilities and [schedule a demo](#) to see it in action.

## ABOUT TECHNICAL TOOLBOXES

Technical Toolboxes is the global leader of integrity analytics for pipelines to help solve the growing, complex challenges they face across crossings, corrosion, welding, and more. Our modern software platform provides a simple way to get the most accurate pipeline engineering calculations so that you can increase team productivity and improve compliance while decreasing risk. We enable energy companies to move away from rudimentary calculations and processes to a world of fast, secure, scalable pipeline insights you can trust.

To learn more about Technical Toolboxes and the Pipeline HUB, go to [www.technicaltoolboxes.com](http://www.technicaltoolboxes.com).

