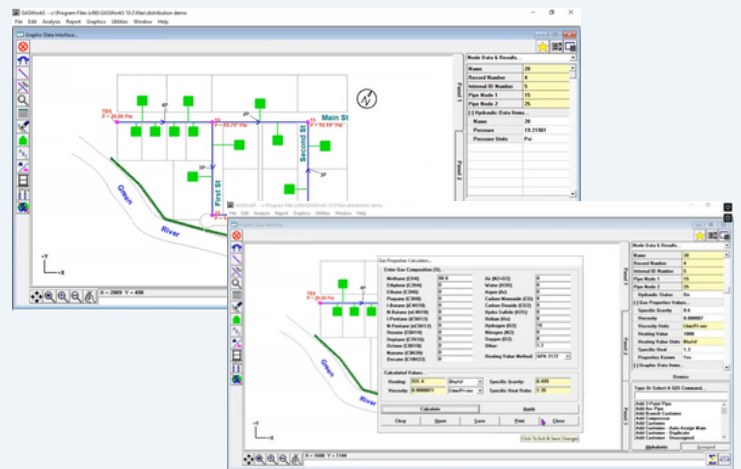




GASWorks™

A trusted, steady-state network modeling tool built for natural gas distribution systems.



GASWorks™ is now part of the Technical Toolboxes product lineup, following our acquisition of the GASWorks™ software assets from B3PE LLC.

GASWorks gives gas engineers and utility operators the tools they need to model, analyze, and optimize gas piping systems. Trusted across the industry for over three decades, GASWorks supports complex distribution and transmission network modeling, from pressure drop to load flow analysis and regulatory compliance checks.

You get detailed hydraulic modeling with the flexibility to simulate real-world gas behavior across various scenarios, helping teams validate system capacity, prepare for growth, and support safe, efficient operations.

You get the same dependable functionality trusted by gas engineers for over 30 years, now backed by the support, integration, and innovation of Technical Toolboxes.

KEY FEATURES

- **Comprehensive System Modeling:** Create steady-state models for distribution and transmission networks of any size or complexity, including regulator stations, valves, pipes, and customer loads.
- **Advanced Calculation Methods:** Supports AGA, IGT, and Weymouth equations along with options for fixed or variable base pressure and temperature. Model both low- and high-pressure systems.
- **Scenario Planning and Comparison:** Run multiple scenarios with saved input sets to compare network behavior under different loading, supply, or system configurations.
- **Mapping and GIS Integration:** Import and export GIS files (e.g., shapefiles), and visually trace pressure zones, flow paths, and customer impacts.
- **Flexible Interface:** Includes drawing tools, customizable data entry grids, and annotation features for faster modeling and clarity.



WHAT'S NEW IN GASWORKS 11.0



Results Comparison Tools

Quickly compare multiple model runs side by side to assess system performance under different scenarios. Ideal for validating design changes, outage planning, or seasonal demand shifts – without switching files.



Enhanced Node & Pipe Reports

Updated reports give quick access to pressures, demands, and flow conditions – with cleaner layouts and one-click export to CSV. Engineers spend less time digging for data and more time solving problems.



Pressure Zone Mapping

New visual indicators automatically color-code pressure zones by class, helping engineers validate system configurations and detect regulator issues without guesswork. It's a faster way to confirm boundaries across large networks.



New Navigation Bar & Drawing Tools

A redesigned interface with grouped tools and a streamlined drawing experience makes it easier to build, view, and edit system layouts. Engineers can work more efficiently on complex models.

FIND OUT MORE

Learn more about [GASWORKS](#)' functionality and [schedule a demo](#) to see it in action.

ABOUT TECHNICAL TOOLBOXES

Technical Toolboxes is the global leader of integrity analytics for pipelines to help solve the growing, complex challenges they face across crossings, corrosion, welding, and more. Our modern software platform provides a simple way to get the most accurate pipeline engineering calculations so that you can increase team productivity and improve compliance while decreasing risk. We enable energy companies to move away from rudimentary calculations and processes to a world of fast, secure, scalable pipeline insights you can trust.

To learn more about Technical Toolboxes and the Pipeline HUB, go to www.technicaltoolboxes.com.

